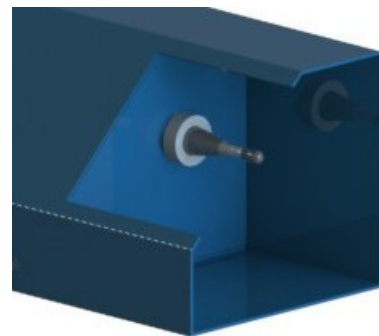


KKL TWO-HAND CONTROL DEVICE



TECHNICAL DATA

Height	1000 mm
Width	565 mm



INSTALLATION AND INSTRUCTION

KKL two-hand control device is connected to the start line of a spot or projection welding machine. The operating voltage is 24 V AC/DC. The operating voltage is directly obtained from the circuit of Kemecweld KRW machines. In connection with these machines a separate power source is not needed.